



Fig. 2.1: Departure of the *mahmal* (Lehnart and Landrock collection on cultnat.org)



Fig. 2.2: The mosque of Qijmas al-Ishaqi on al-Tabbana street (*The Monuments Of Historic Cairo: A Map and Descriptive Catalogue*)

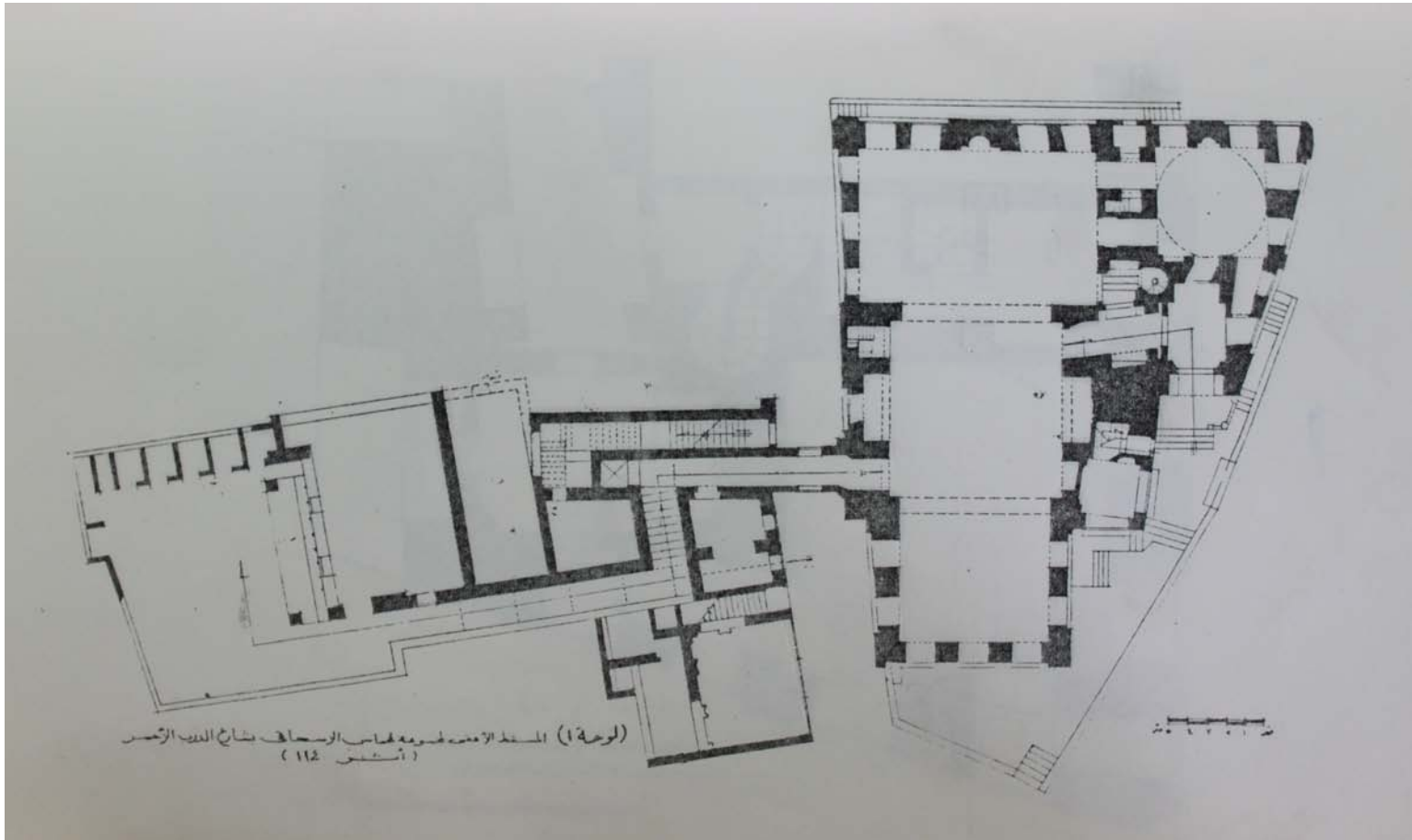
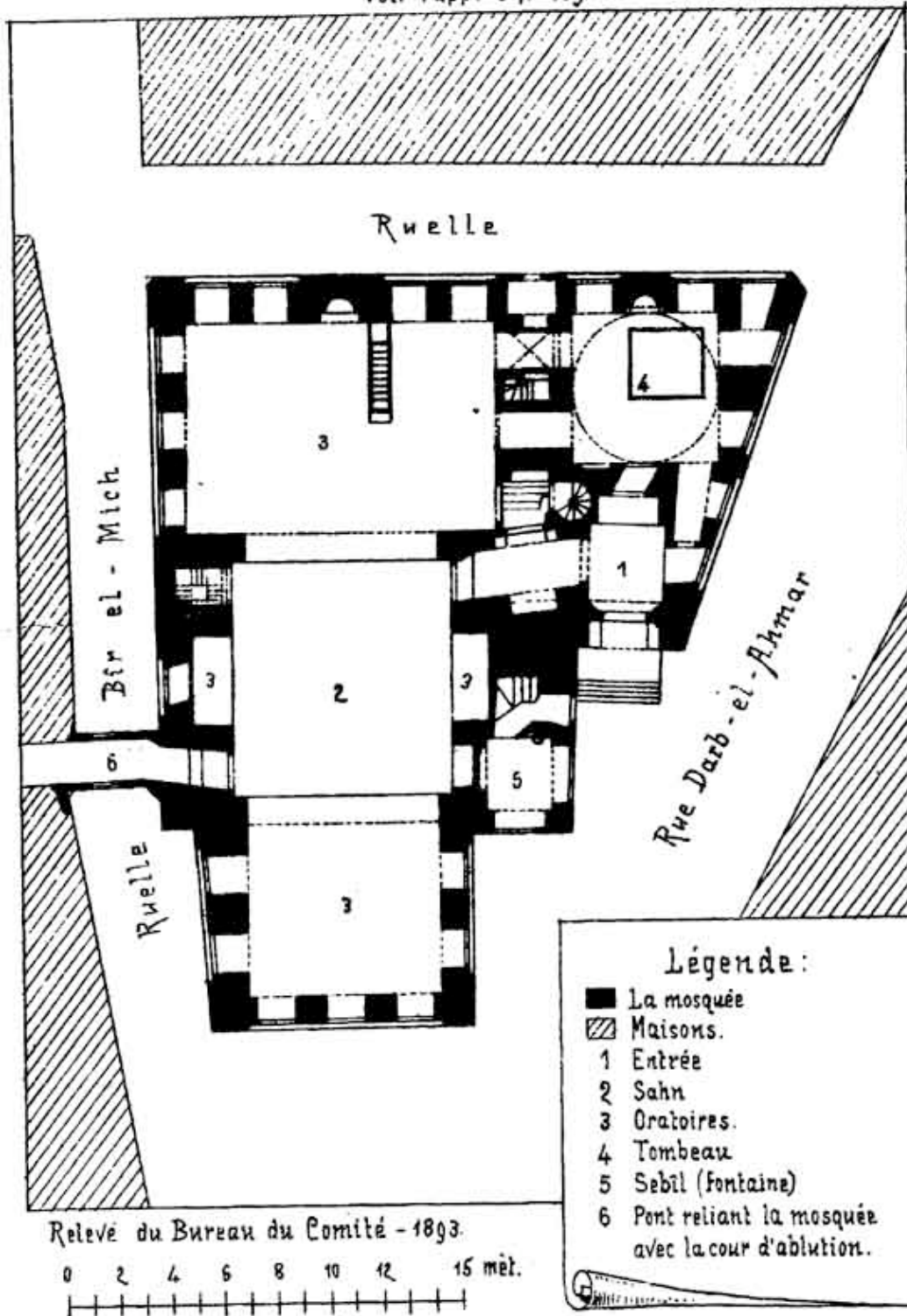


Fig. 2.3: Ground plan of the mosque and its dependencies (Supreme Council of Antiquities)



Plan de la mosquée Kismās el-Ishāki - Caïre.

Fig. 2.4: Ground plan of the mosque (Comité Bulletin dated to 1892)



Fig. 2.5: The shops at street level on the northwest facade



Fig. 2.6: The northwest facade



Fig. 2.7: The stepped southwest facade



Fig. 2.8: The kuttab and the drinking trough



Fig. 2.9: Door of the sabil on the southwest facade



Fig. 2.10: The shadirwan of the sabil with its muqarnas hood



Fig. 2.11: The ceiling of the sabil



Fig. 2.12: The cells above the sabil

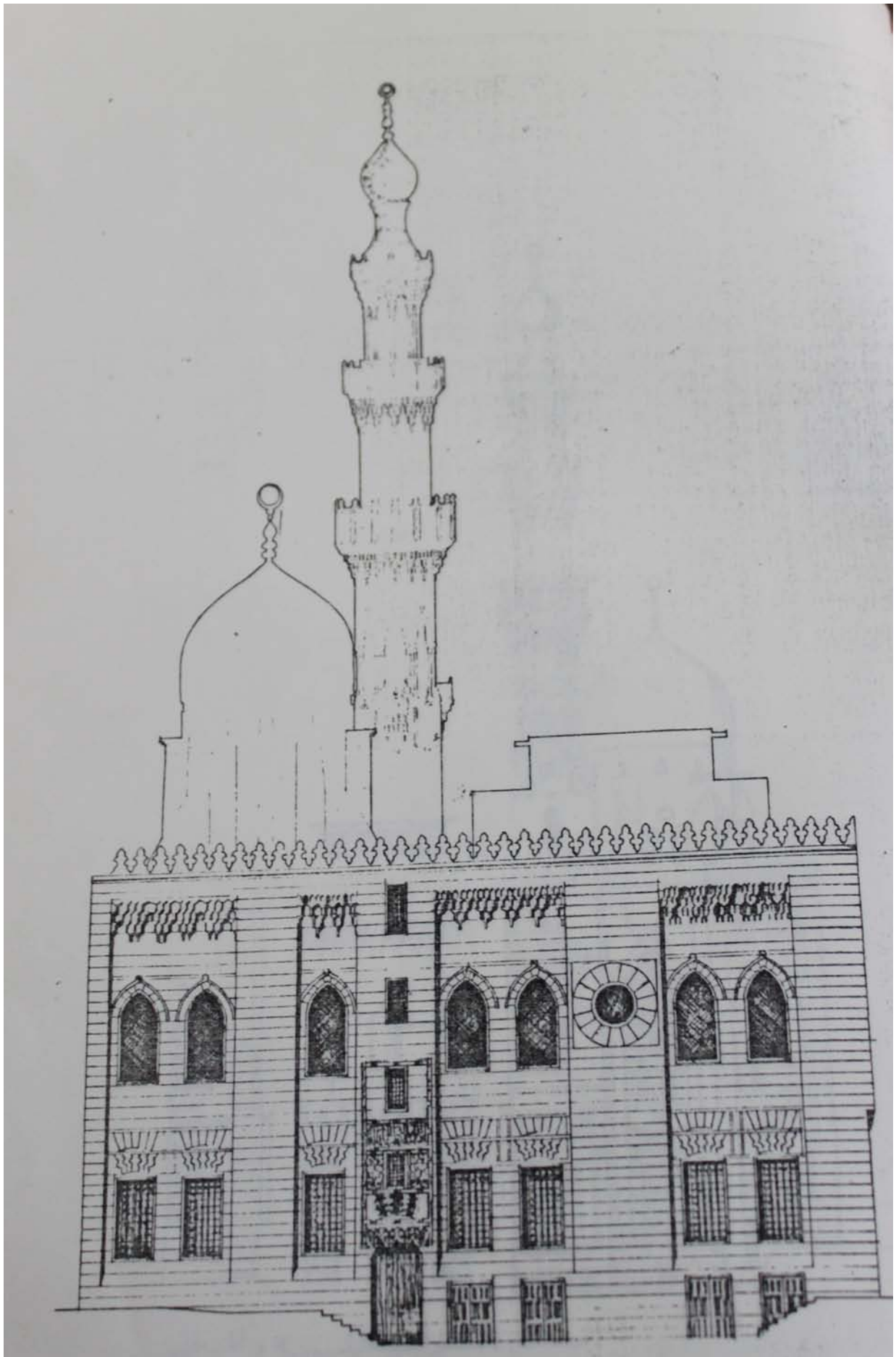


Fig. 2.13: Drawing showing the eastern qibla façade (Yehia's thesis on the mosque of Qijmas al-Ishaqi)



Fig. 2.14 Qibla façade portal leading to the mausoleum crypt

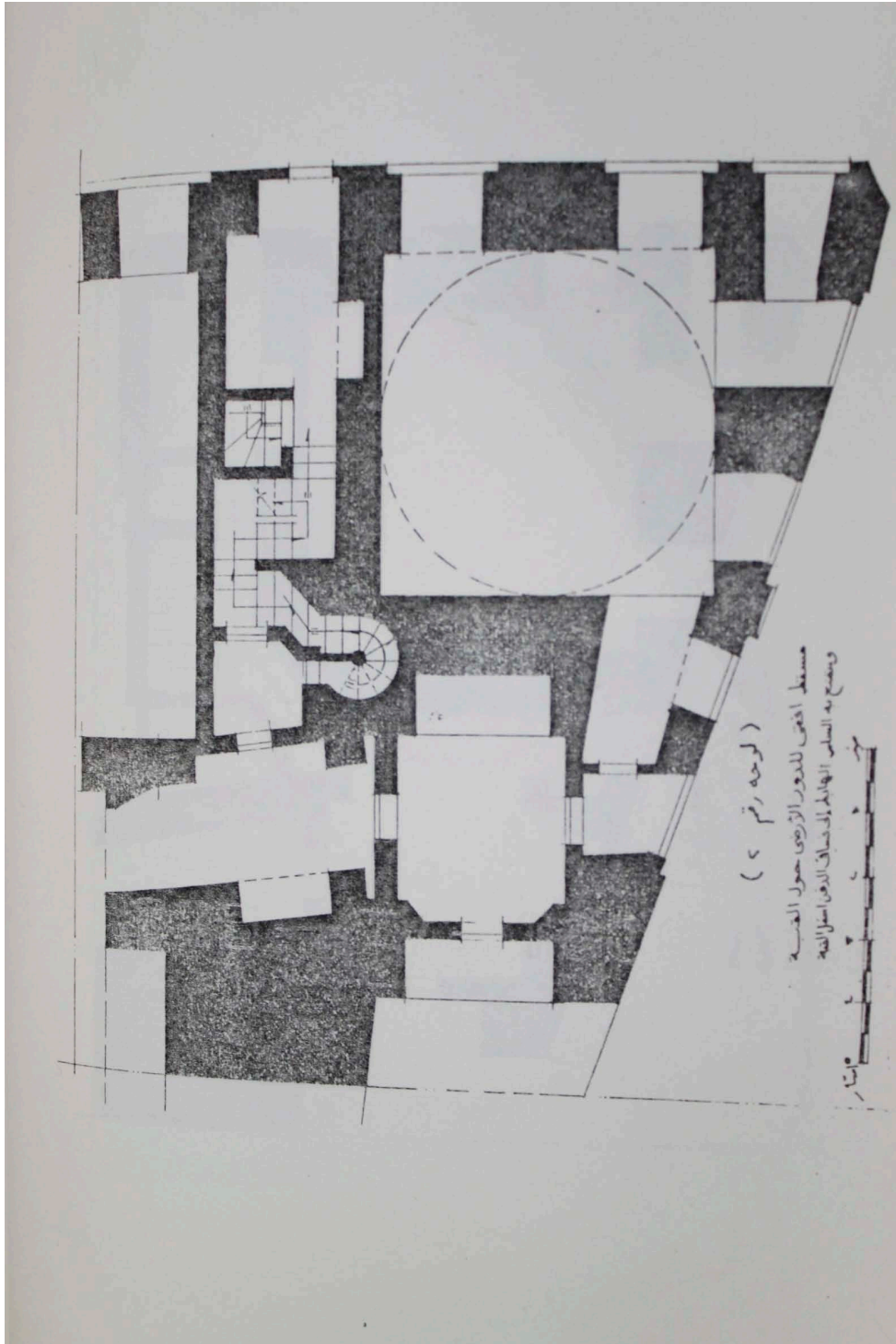


Fig. 2.15: Ground floor plan of the area around the mausoleum
(Supreme Council of Antiquities)



Fig. 2.16: Windows of the cells above the southern lateral iwan

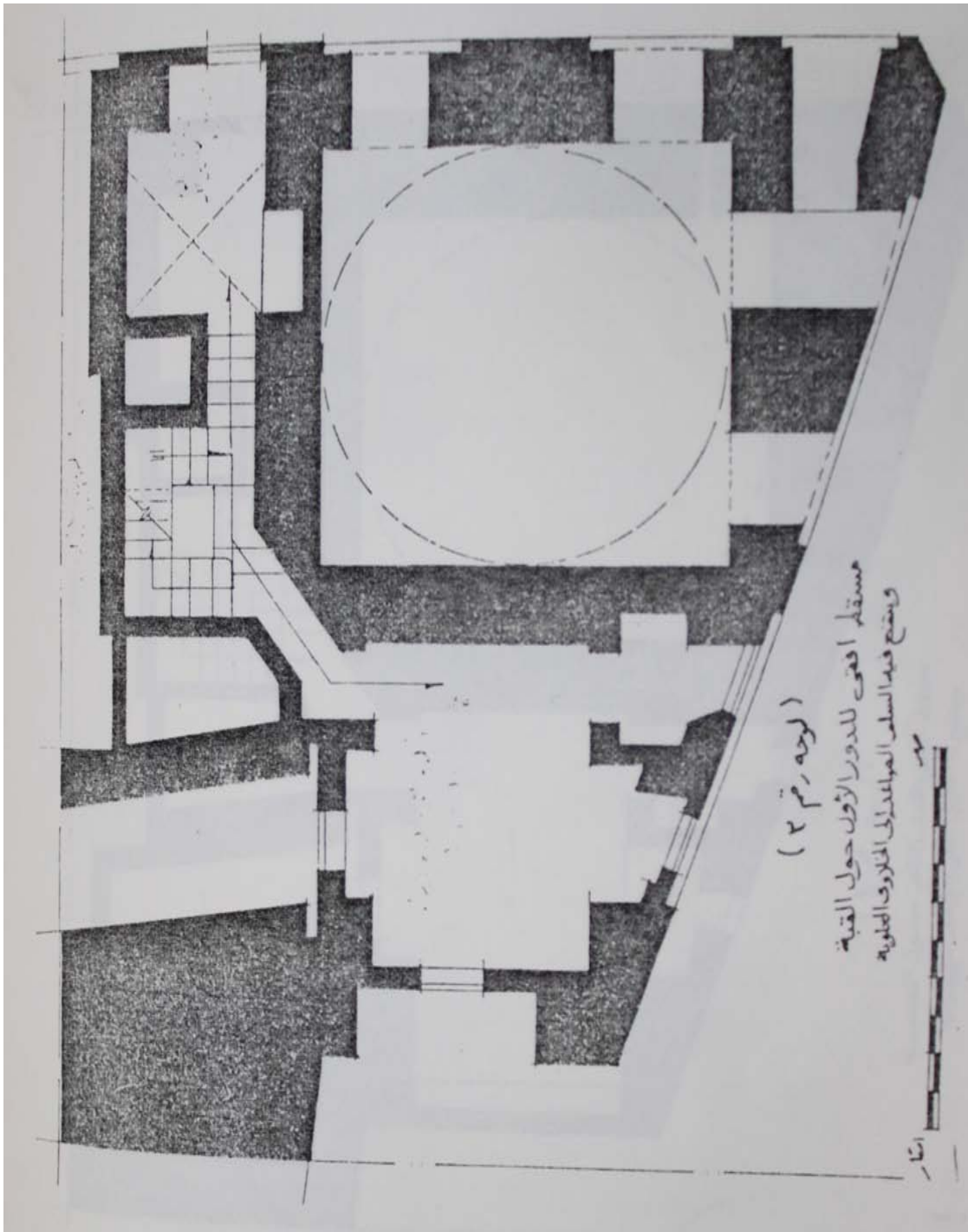


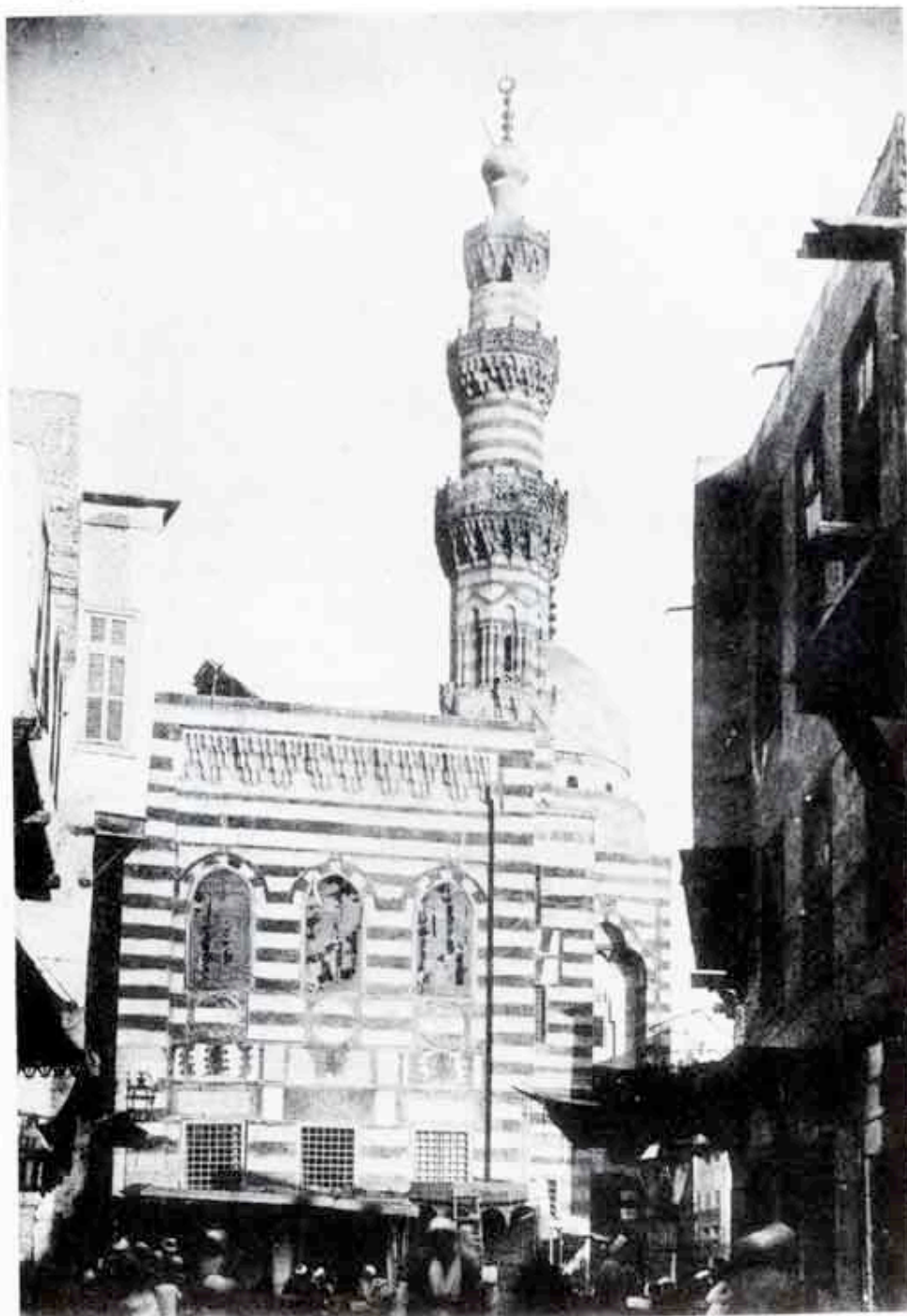
Fig. 2.17: Plan of the upper floor of the mosque around the mausoleum (Supreme Council of Antiquities)



Fig. 2.18: The bridge leading to the mosque's dependencies



Fig. 2.19: The groin vaulted corridor of the ablution court



Photogr. artistique G. Lékegian et Co.

Phototypie de l'Imp. Nat.

MOSQUÉE KISMAS EL-ISHAKI, CAIRE

FAÇADE OUEST

Fig. 2.20: Comité picture of the mosque taken in 1892



Fig. 2.21: The Comité lantern in the mosque of Qijmas

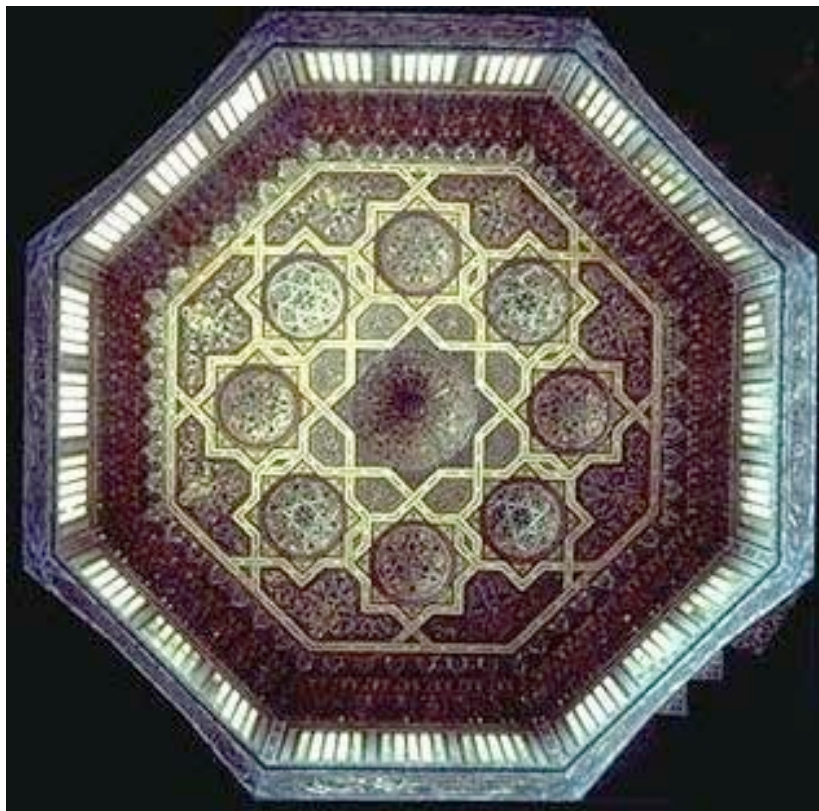


Fig. 2.22: The Comité lantern in the funerary complex of Qaytbay in the Northern Cemetery



Fig. 2.23: The opening above the sahn in the madrasa of al-Ghuri



Fig. 2.24: The restoration inscription on the minbar below the crenellations



Fig. 3.1: The northern façade overlooking Abu Hurayba street



Fig. 3.2: The eastern façade overlooking the narrow Sikkat Abu Hurayba



Fig. 3.3: The northern lateral iwan



Fig. 3.4: The sliding door leading from the entrance vestibule to the sahn of the mosque of Qijmas

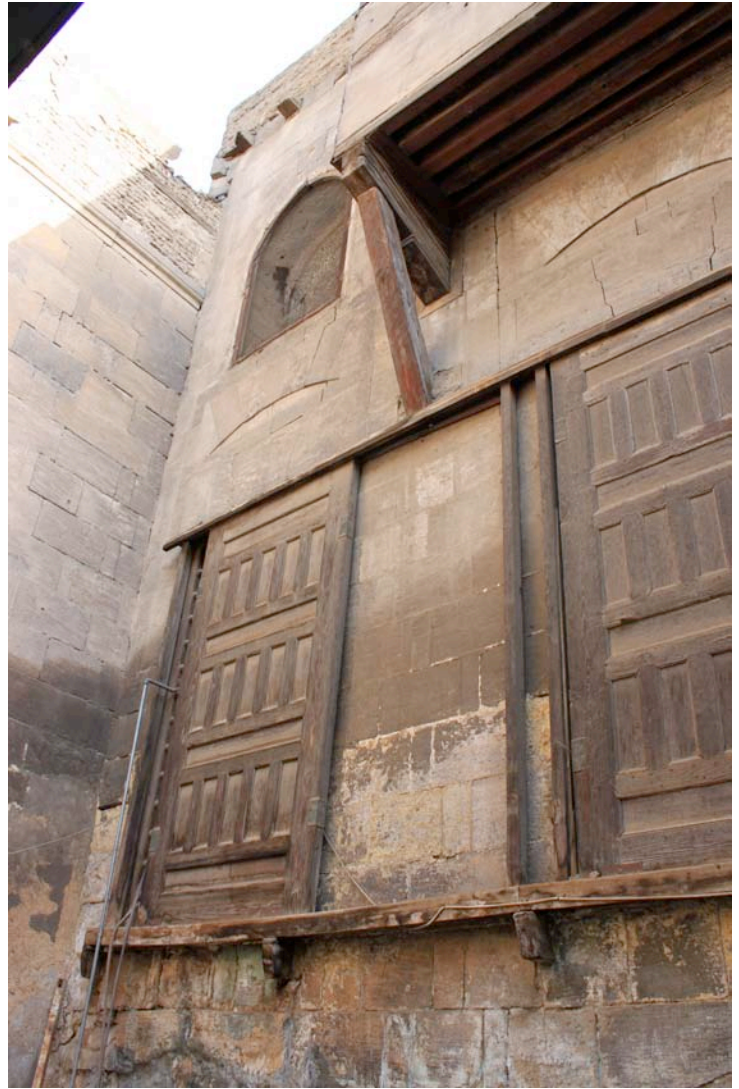


Fig. 3.5: The sliding windows of the iwan of the mosque of Abu Bakr Muzhir



Fig. 3.6: Window of the entrance vestibule overlooking al-Tabbana street



Fig. 3.7: The mausoleum overlooking al-Tabbana and Sikkat Abu Hurayba



Fig. 3.8: The view of the southwest façade coming from the Citadel towards Bab Zuwayla

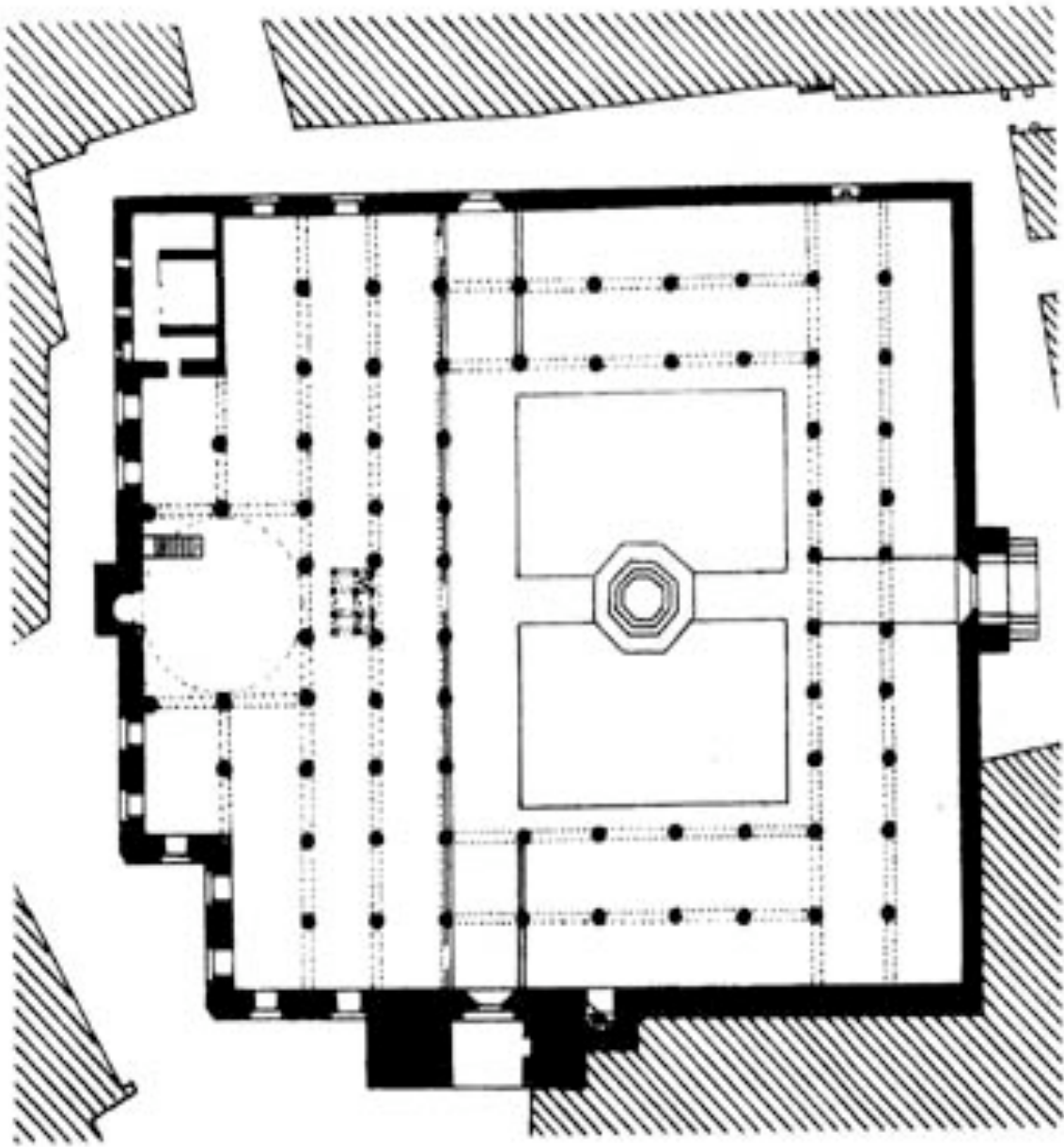


Fig. 3.9: The plan of al-Maridani mosque showing the stepped façade on al-Tabbana
(*Cairo of the Mamluks*)



Fig. 3.10: The silhouette of the mosque with its upward projections



Fig. 3.11: The open-air passageway leading from the entrance vestibule into the sahn



Fig. 4.1: Carved naskhi inscription on the qibla façade portal



Fig. 4.2: Radial inscription on the metal revetted door of the main portal



Fig. 4.3: Radial inscription on the main portal of al-Aqmar mosque

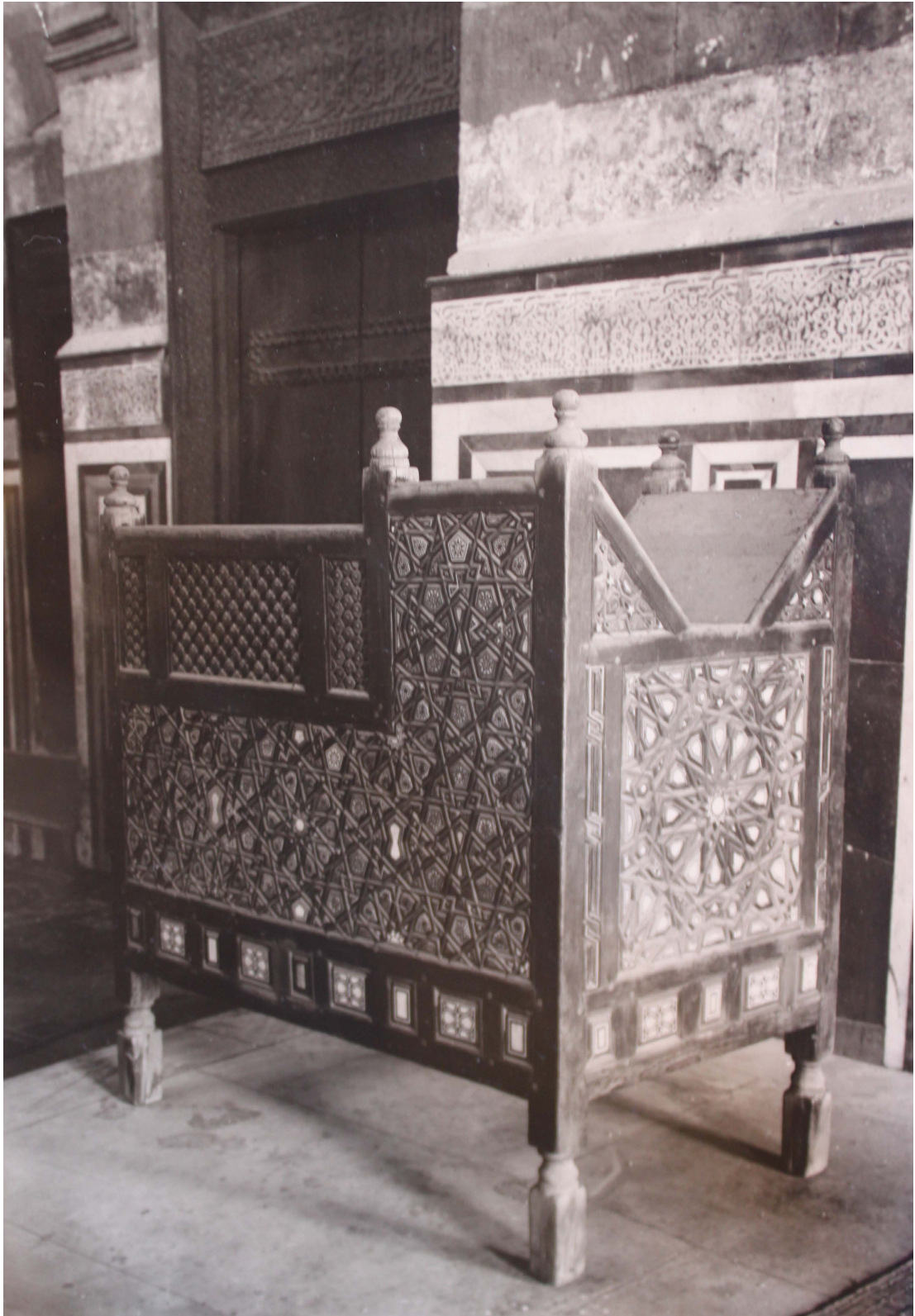


Fig. 4.4: The kursi of the mosque (Creswell Special Collection – Rare Books and Special Collections Library – American University in Cairo)



Fig. 4.5: The inscription on the side of the minbar



Fig. 4.6: The inscription on the upper band of the metal revetted door of the main portal



Fig. 4.7: The inscription below the ceiling of the sahn



Fig. 4.8: The stucco window of the southern lateral iwan



Fig. 4.9: The craftsman's signature in the qibla window spandrels



Fig. 4.10: The craftsman's signature in the mihrab niche



Fig. 4.11: The main portal of the mosque



Fig. 4.12: The hood of the main portal



Fig. 4.13: Window with muqarnas hood in the mosque of Qijmas al-Ishaqi



Fig. 4.14: Window with muqarnas hood in the mosque of Abu Bakr Muzhir



Fig. 4.15: Framing band around the main portal (Creswell Archive, Ashmolean Museum – Harvard College Library)



Fig. 4.16: Roundel on the main portal

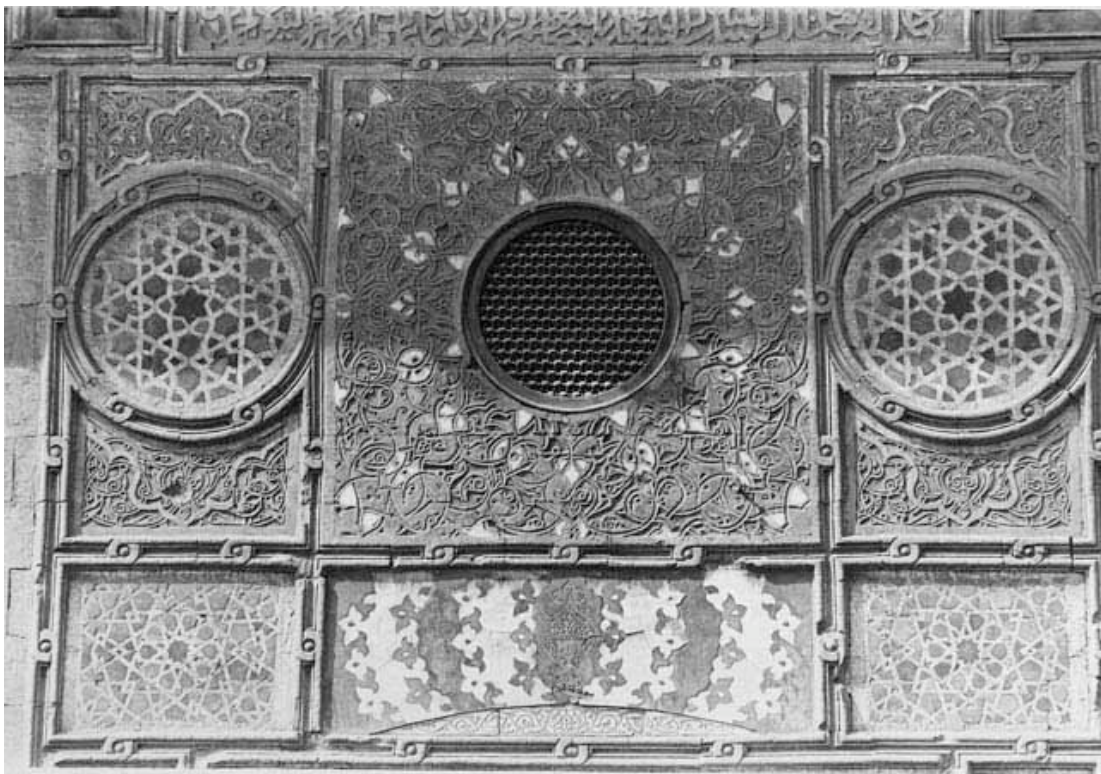


Fig. 4.17: Roundels on the façade of the sabil/kuttab of Qaytbay on al-Saliba (Fikret Yegül – Harvard College Library)



Fig. 4.18: Panel next to the main portal of the zawiya of Faraj ibn Barquq



Fig. 4.19: The metal revetted door of the main portal



Fig. 4.20: The knotted design on the bottom panel of the metal revetted door of the main portal



Fig. 4.21: The carved knotted design on the northwest façade



Fig. 4.22: The lotus flower design on the metal revetted door of the main portal



Fig. 4.23: The doorknockers of the metal revetted door of the main portal



Fig. 4.24: The lozenge-shaped boss of the sabil grille



Fig. 4.25: Metal band doors of the interior



Fig. 4.26: The minaret

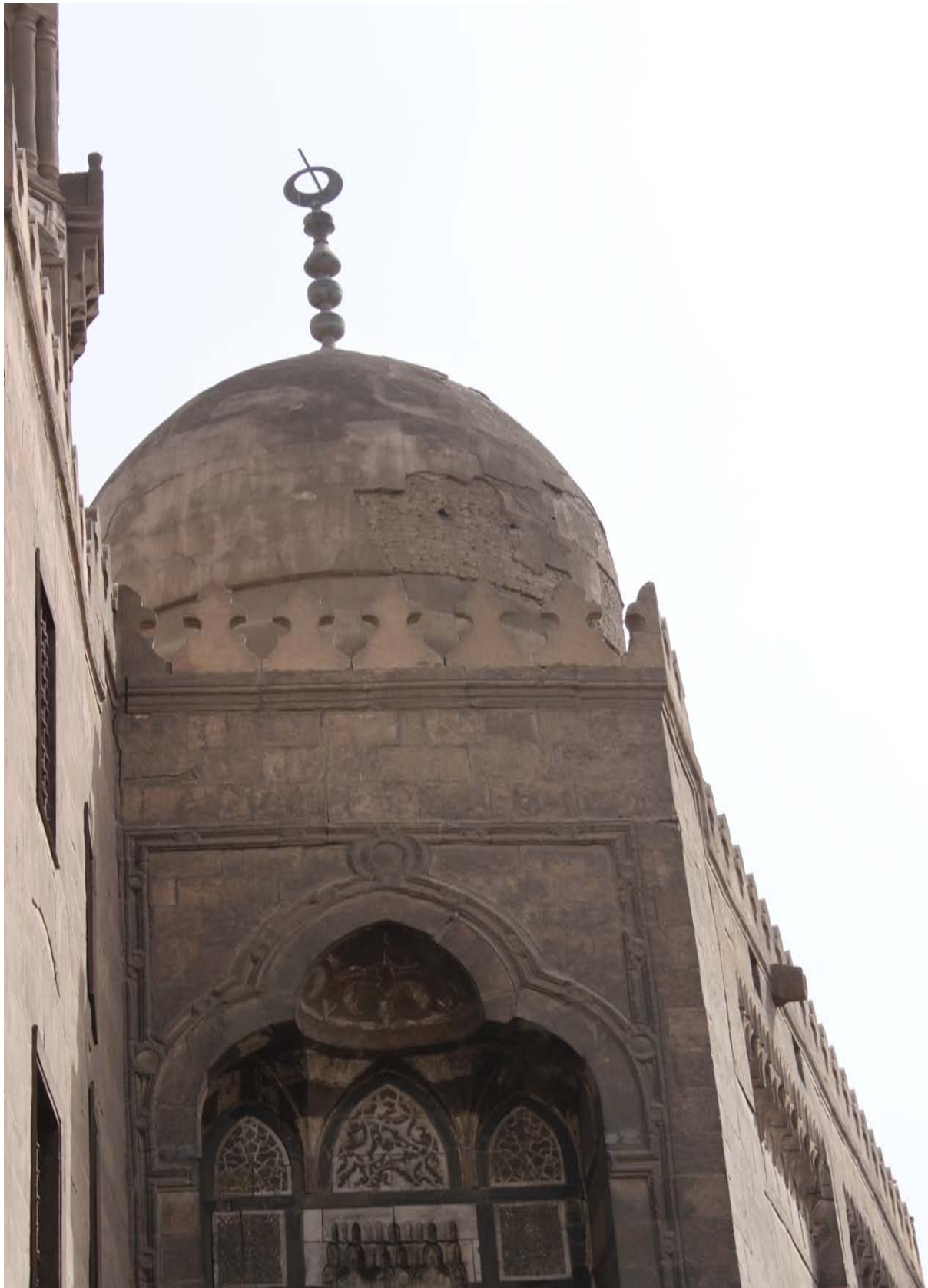


Fig. 4.27: The dome of the mausoleum

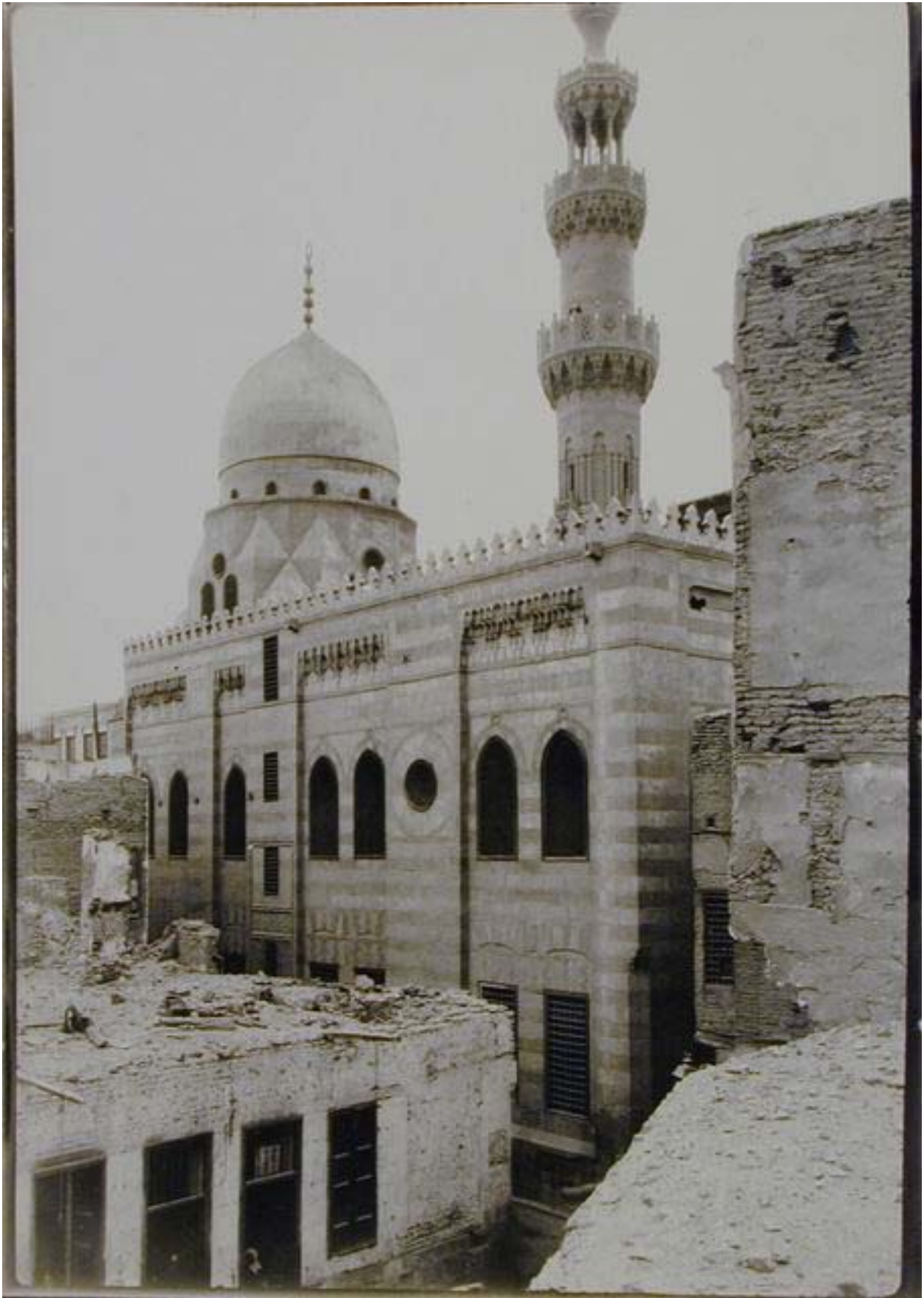


Fig. 4.28: The dome and its transitional zone (Creswell Archive, Ashmolean Museum – Harvard College Library)



Fig. 4.29: The mausoleum dome viewed from the interior



Fig. 4.30: The mihrab of the mausoleum

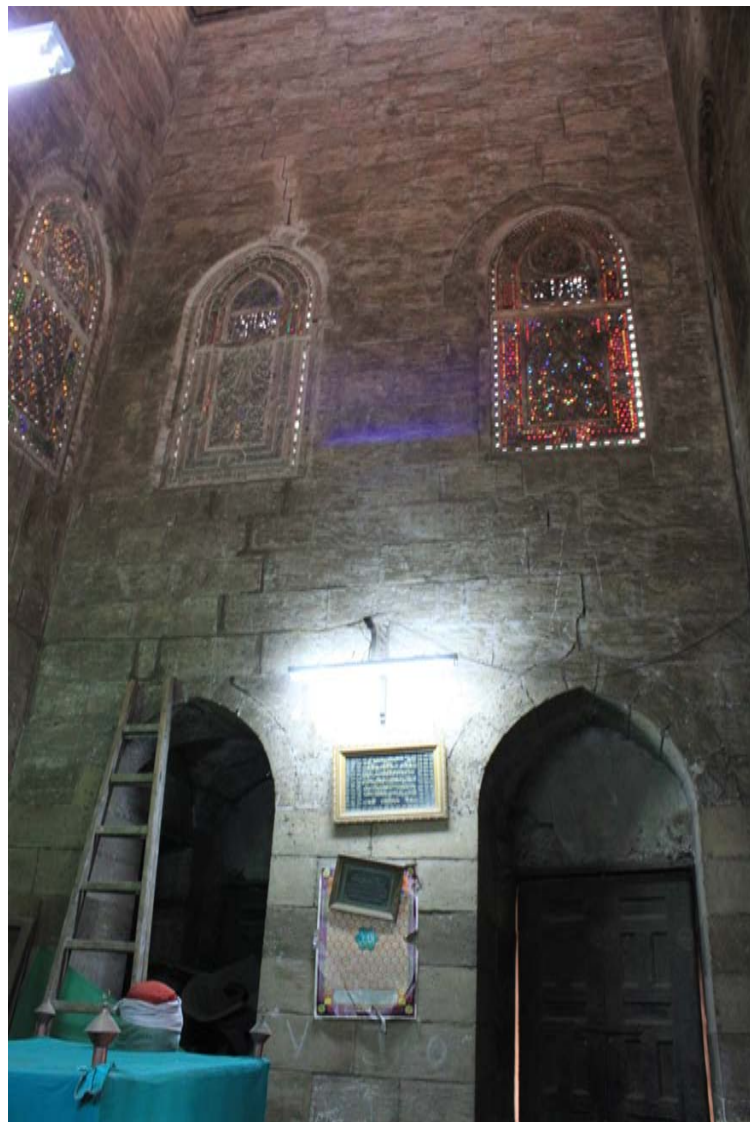


Fig. 4.31: The mausoleum interior



Fig. 4.32: The inlaid marble floor of the mausoleum



Fig. 4.33: Engaged column of the northwest façade

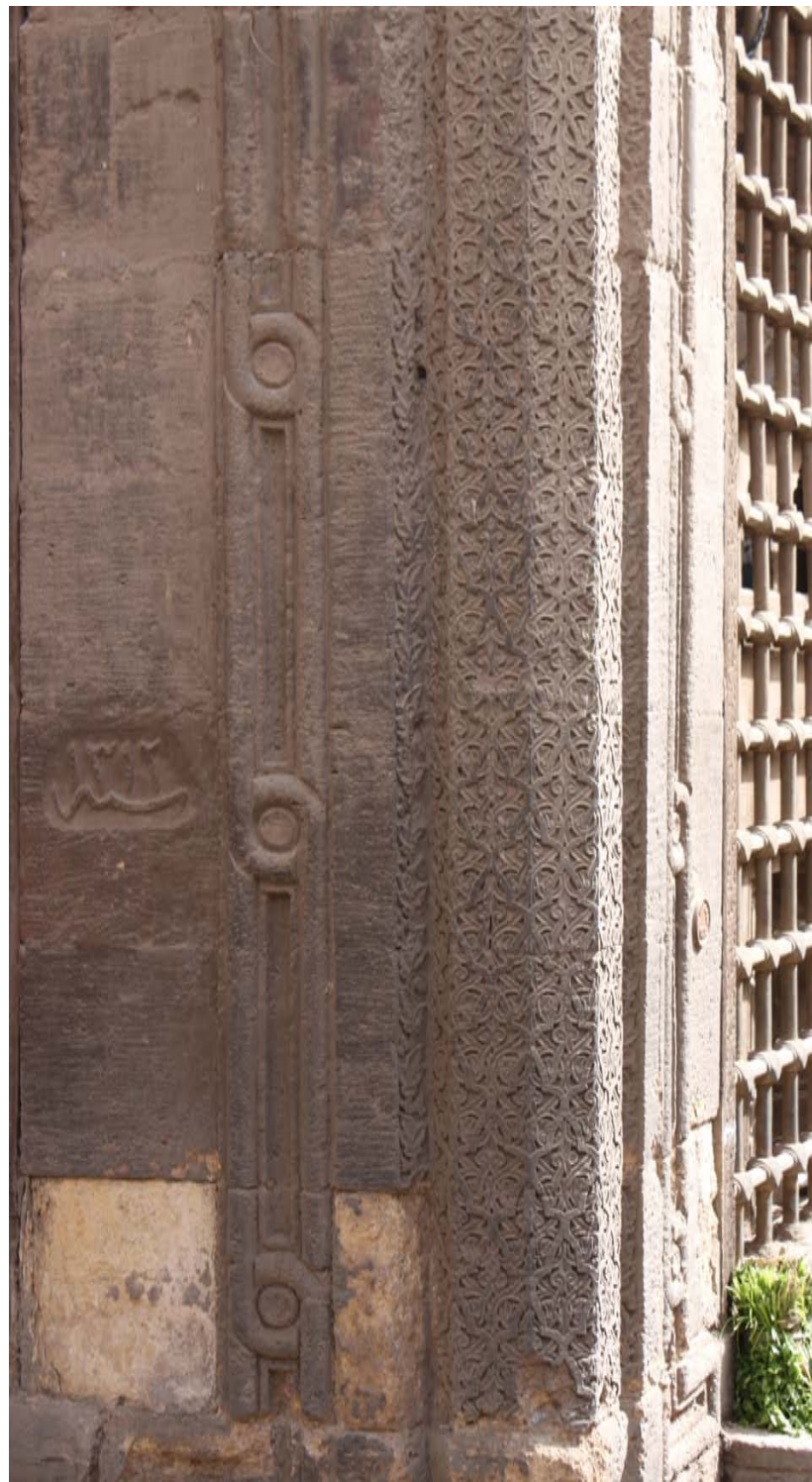


Fig. 4.34: Engaged column of the sabil corner on the southwest façade



Fig. 4.35: Carved horizontal panel on the northwest façade



Fig. 4.36: Inlaid marble panels on the northwest façade



Fig. 4.37: Trefoil panel on the sabil façade



Fig. 4.38: Inlaid marble panel on the northwest side of the sabil



Fig. 4.39: Inlaid marble panel on the southwest side of the sabil



Fig. 4.40: The mihrab of the mosque



Fig. 4.41: The spandrels of the mihrab of al-Mu'ayyad Shaykh mosque



Fig. 4.42: The conch of the mihrab of Qijmas



Fig. 4.43: Dotted geometric patterns on the main portal of the zawiya of Faraj ibn Barquq



Fig. 4.44: The kufic inscription in the mihrab of Qijmas



Fig. 4.45: The kufic inscription in the domed mosque of Yashbak (*Cairo of the Mamluks*)



Fig. 4.46: The mihrab niche

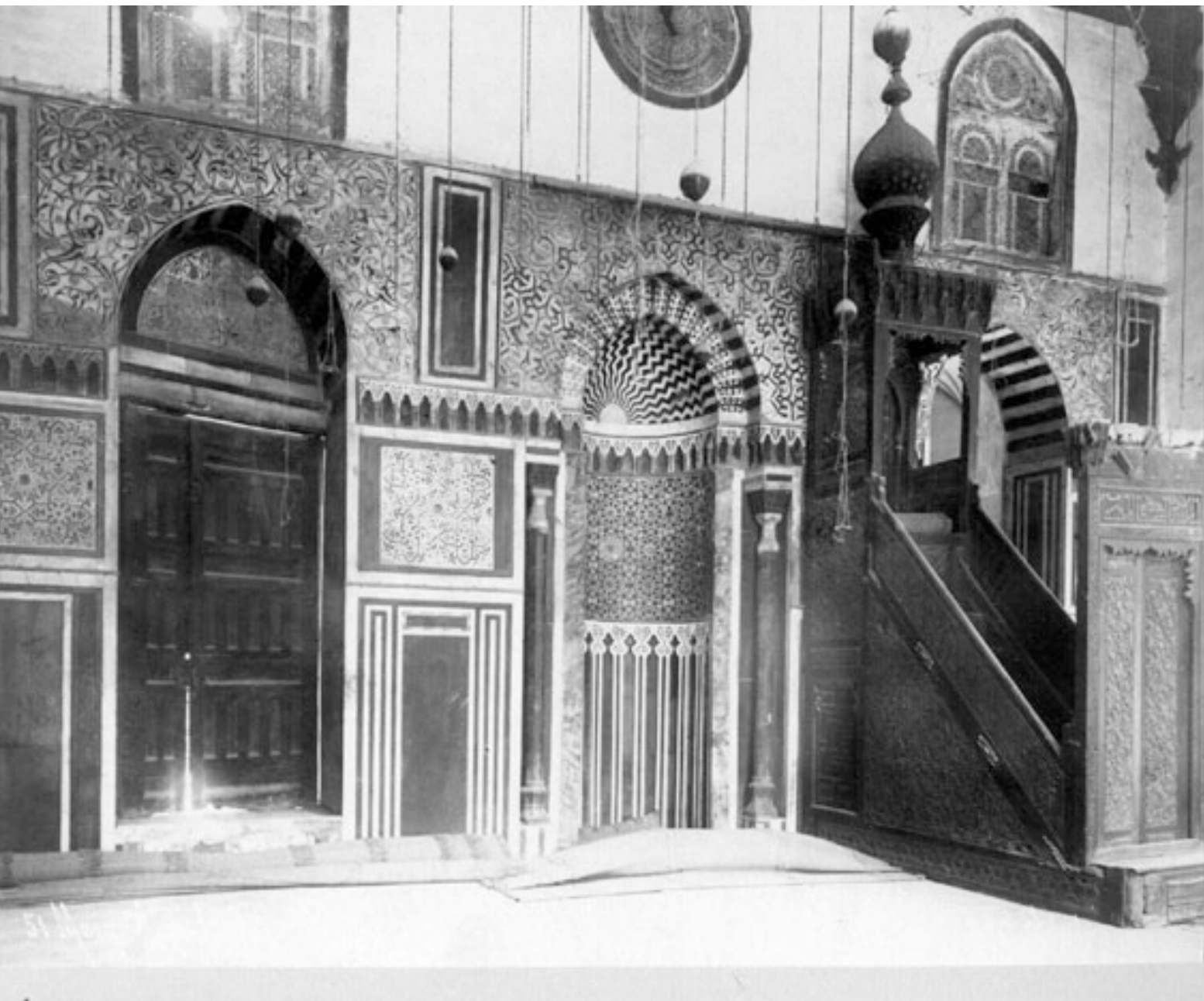


Fig. 4.47: The qibla wall of the mosque of Abu Bakr Muzhir (J.P. Sebah – Harvard College Library)



Fig. 4.48: Example of Mamluk metalware in the Veneto-Saracenic style (“Veneto-Saracenic Metalware”)



Fig. 4.49: The decoration of the interior



Fig. 4.50: Keel arches of the interior

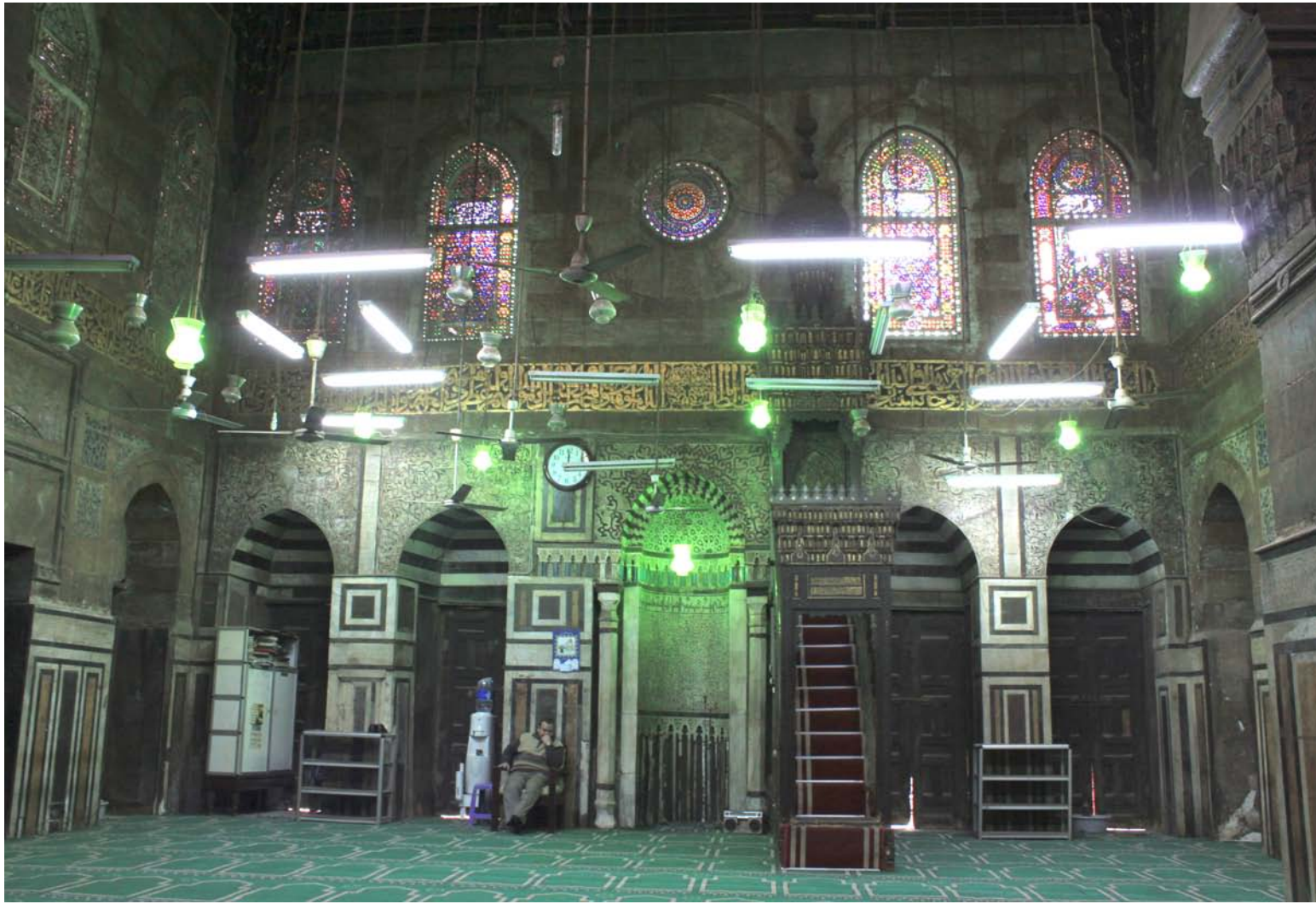


Fig. 4.51: The qibla wall

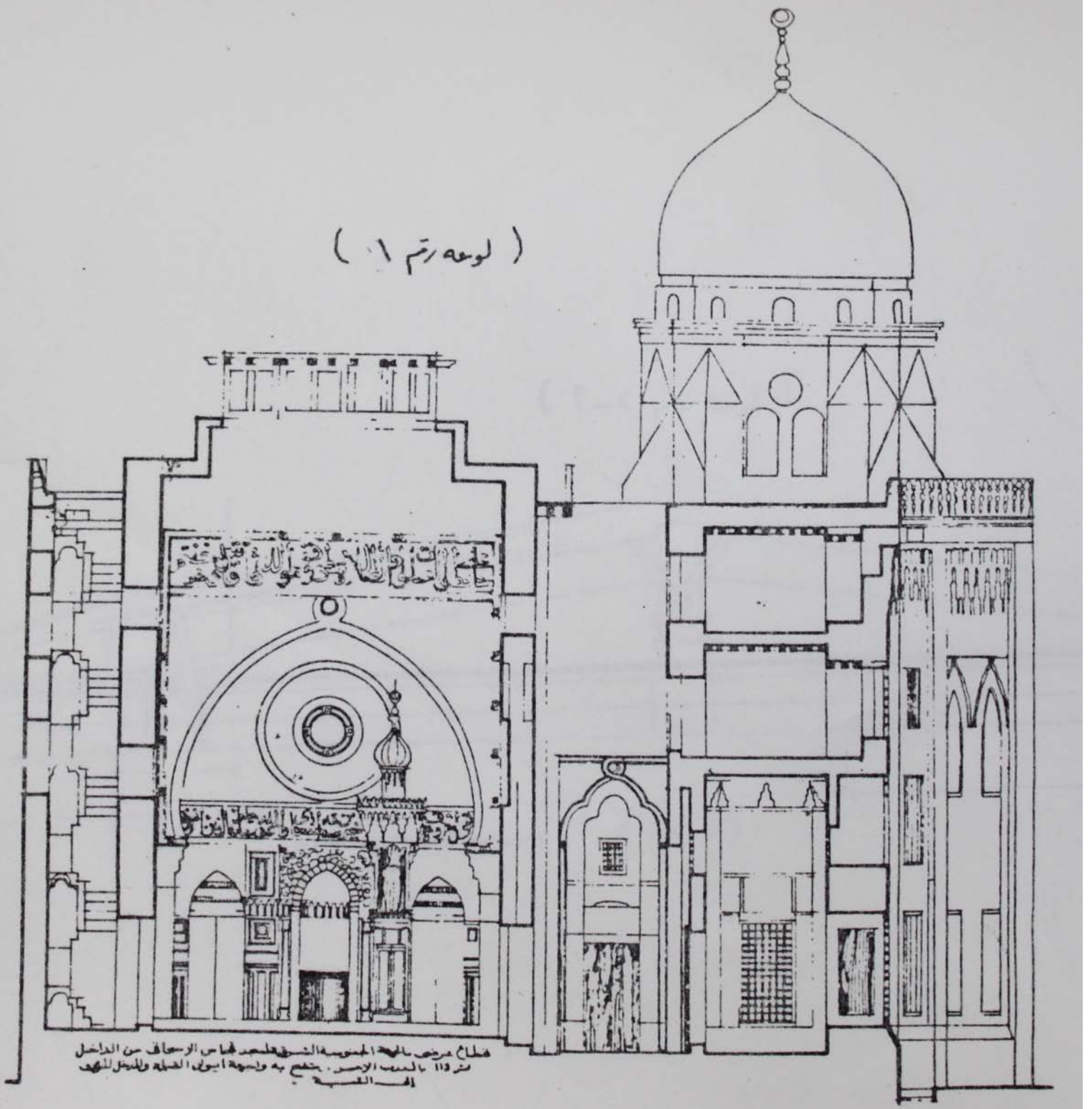


Fig. 4.52: Section drawing from the middle of the sahn looking onto the qibla wall (Supreme Council of Antiquities)



Fig. 4.53: Ending of the iwan arches



Fig. 4.54: Groin vault with the cruciform on the ceiling of the stairs leading to the ablution corridor



Fig. 4.55: The minbar



Fig. 4.56: The door of the minbar (*Documentation of the Inscriptions in the Historic Zone of Cairo*)



Fig. 4.57: The inscription in the interior of the minbar below the crenellations



Fig. 4.58: The bulb top of the minbar



Fig. 4.59: The qibla iwan ceiling



Fig. 4.60: Lateral iwan ceiling



Fig. 4.61: Detail of the area below the roundel of the main portal